

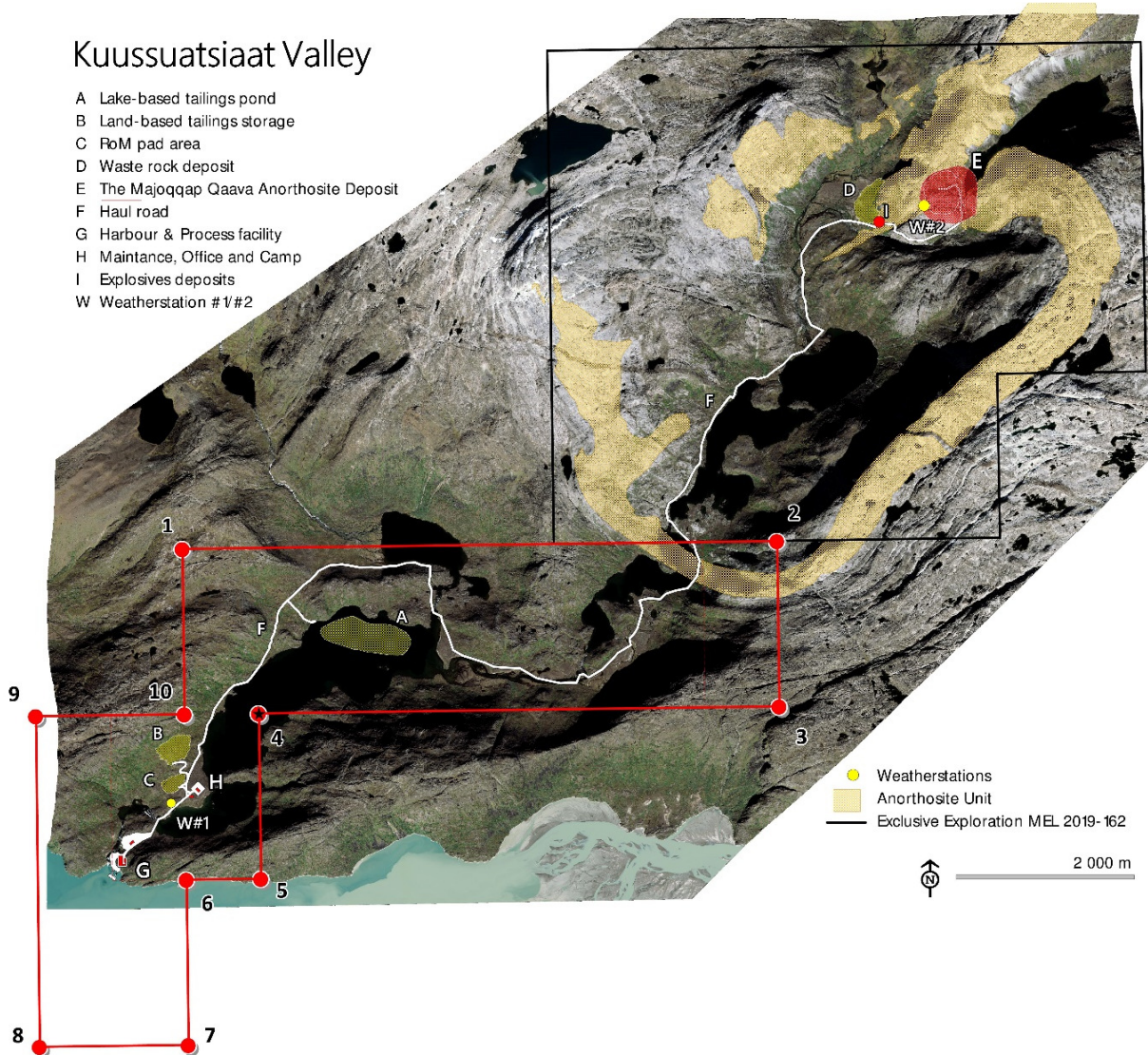
# Annex 1

---

Enlargement of mineral exploration license MEL 2019-162

## Kuussuatsiaat Valley

- A Lake-based tailings pond
- B Land-based tailings storage
- C RoM pad area
- D Waste rock deposit
- E The Majoqqap Qaava Anorthosite Deposit
- F Haul road
- G Harbour & Process facility
- H Maintance, Office and Camp
- I Explosives deposits
- W Weatherstation # 1/#2



Outline of mineral exploration license MEL 2019-162, and the applied enlargement (application M-MLSA-363), delineated by corner coordinates 1 to 10. The latter area has been applied for in order to include infrastructural elements in the overall license area and to ensure the project access to the sea and shipping of ore.